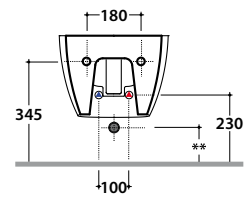
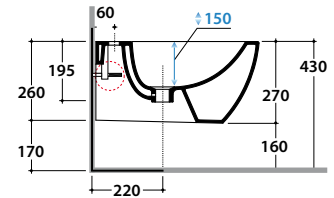
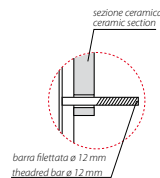
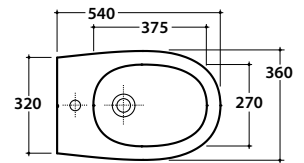


# 4ALL BIDET MDS09.BI

# GLOBO



\*\* per installazione con / for installation with:  
-sifone a "S"/siphon "S": mm 140  
-sifone SF052/siphon SF052: mm 120

Cod. **MDS09.BI**

Bidet sospeso monoforo con sistema di fissaggio dal basso nascosto.

Peso 17 kg.

Wall-hung bidet one hole provided with lower hidden fixing system.

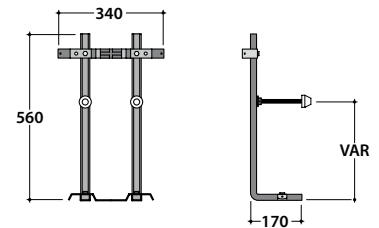
Weight 17 kg.



Cod. **FI002**

Staffa di fissaggio a "L". (Barra filettata ø12). Peso 2,5 kg.

Fixing brackets for W/H sanitary. Threaded bar ø 12. Weight 2,5 kg.



Cod. **PU001**

Protezione antiurto e acustica. Peso 0,2 kg.

Acoustic and crash protection. Weight 0,2 kg.